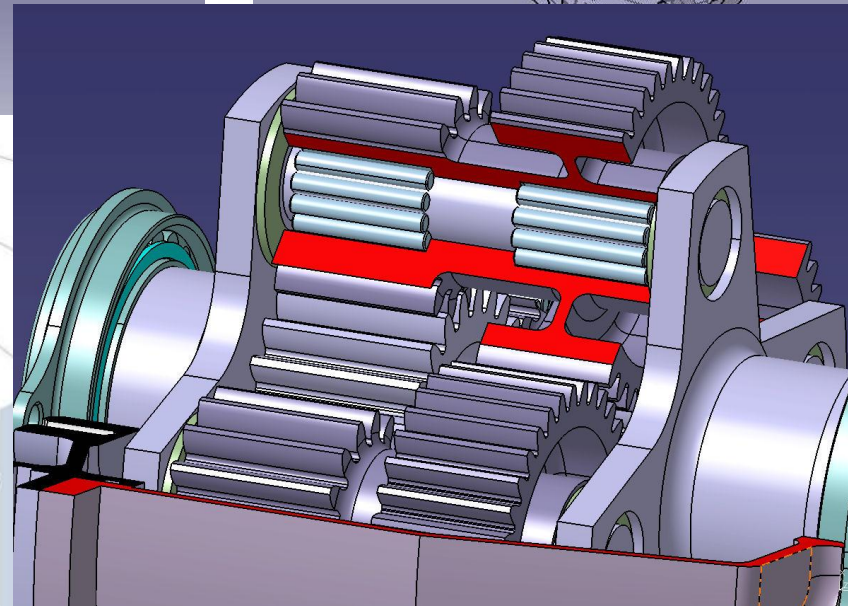
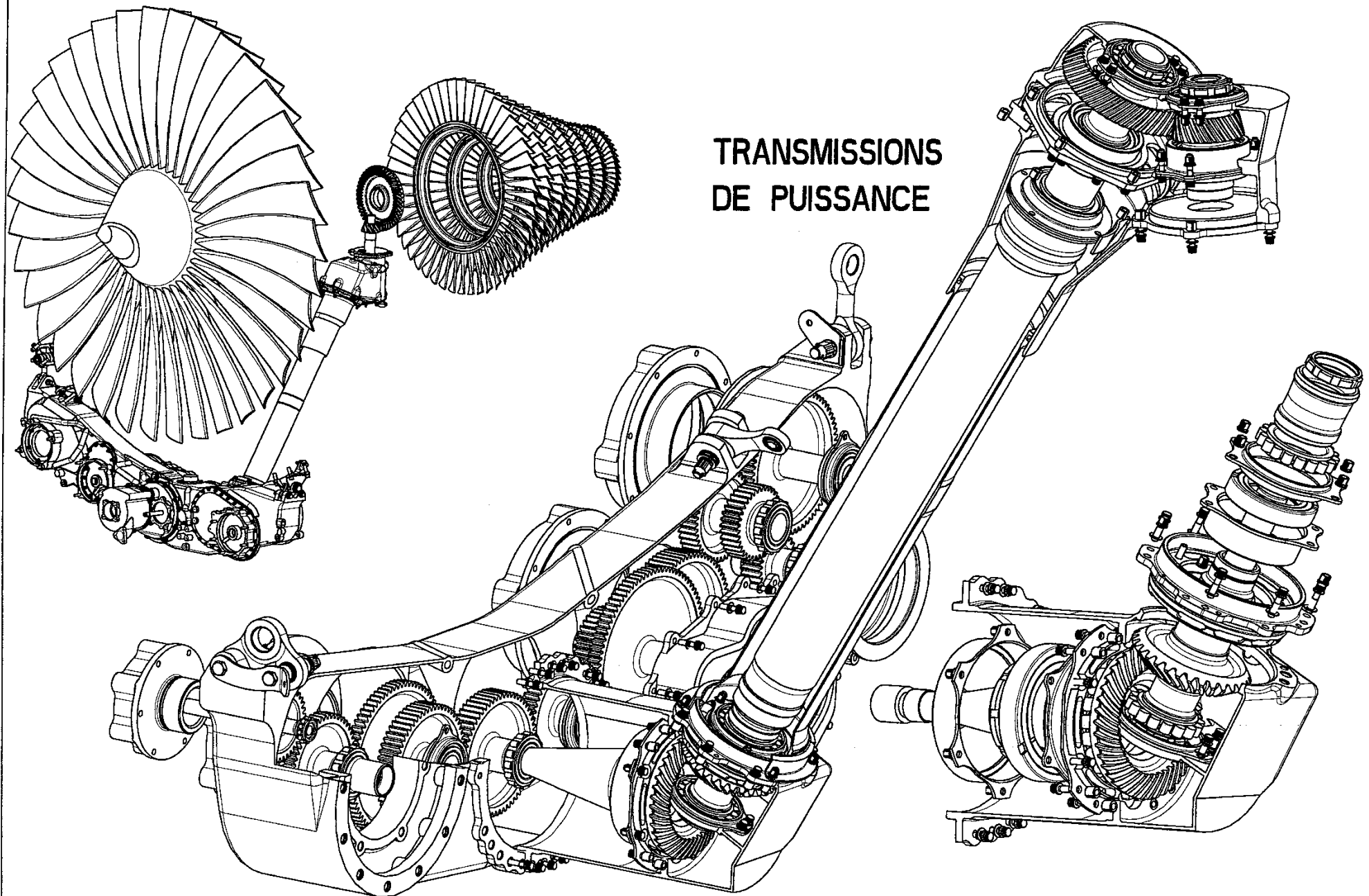


# CONCEPTION AUTOMATISEE DE BOITES D'ENGRENAGES ET REDUCTEURS SUR CATIA

G.DEDIEU

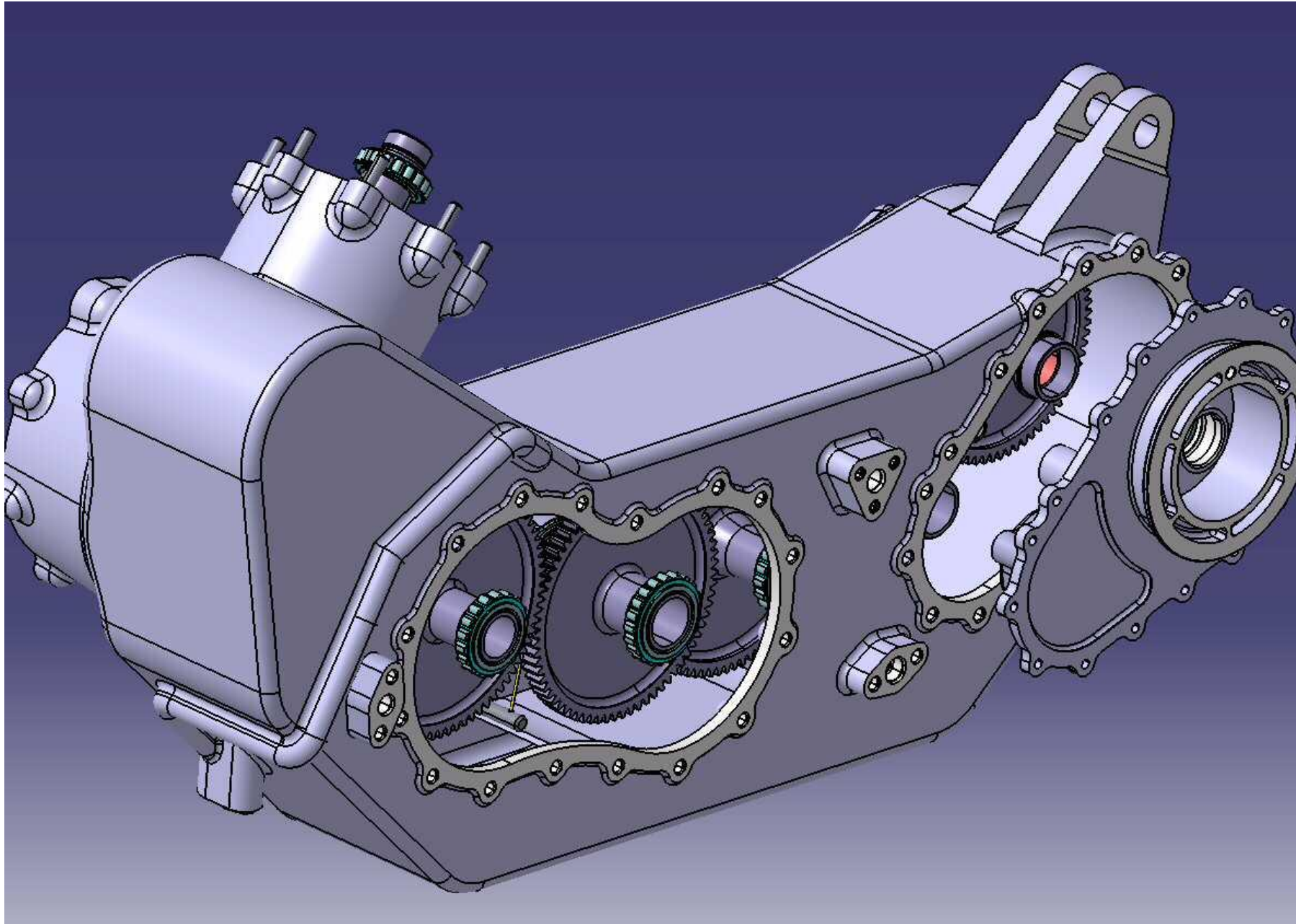


# TRANSMISSIONS DE PUISSANCE

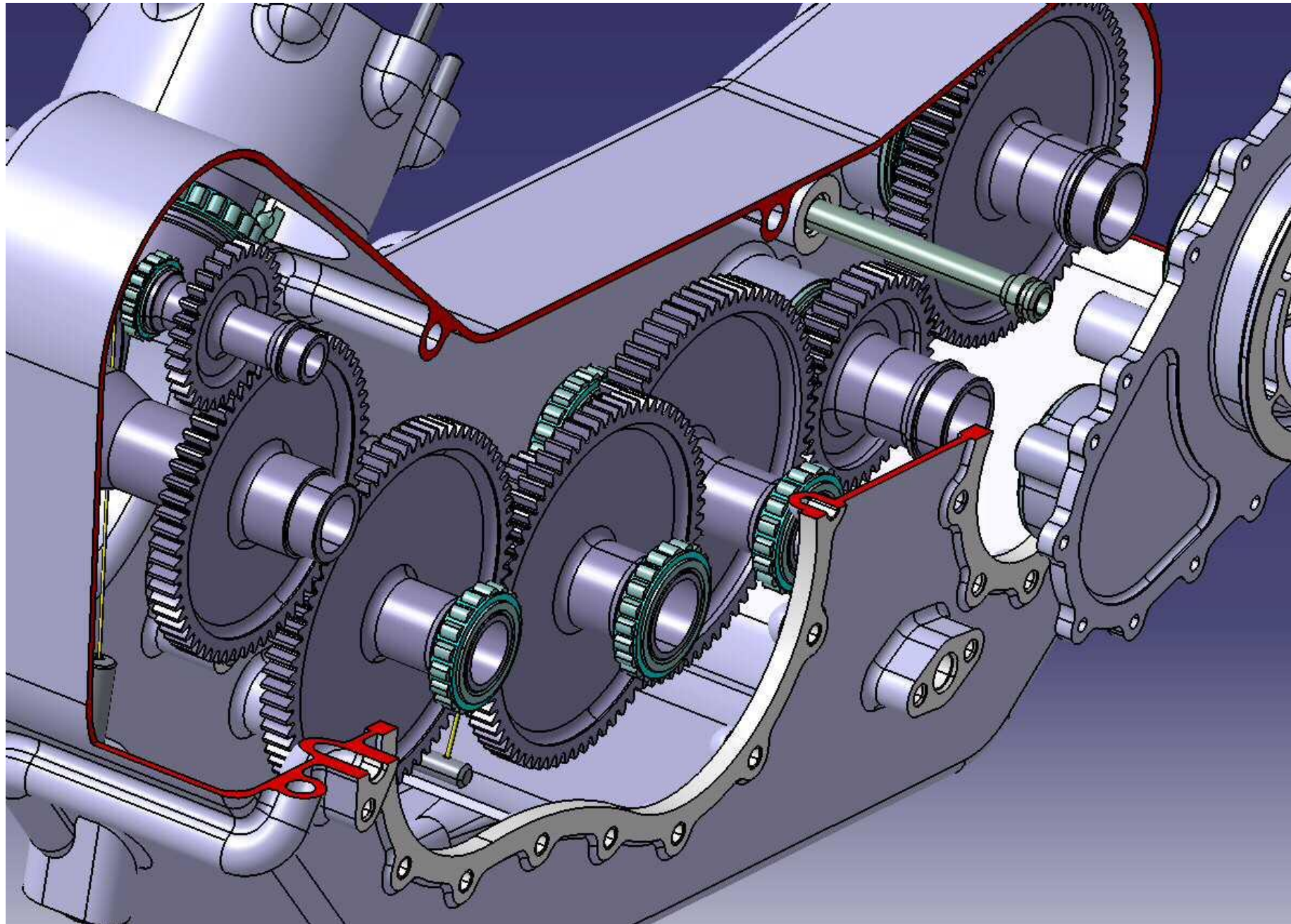




**BOITE ENTIEREMENT PARAMETREE - SUR CATIA V5.**  
(COMPLETEMENT MODIFIABLE PAR CHANGEMENT DE DONNEES D'ENTREE.)

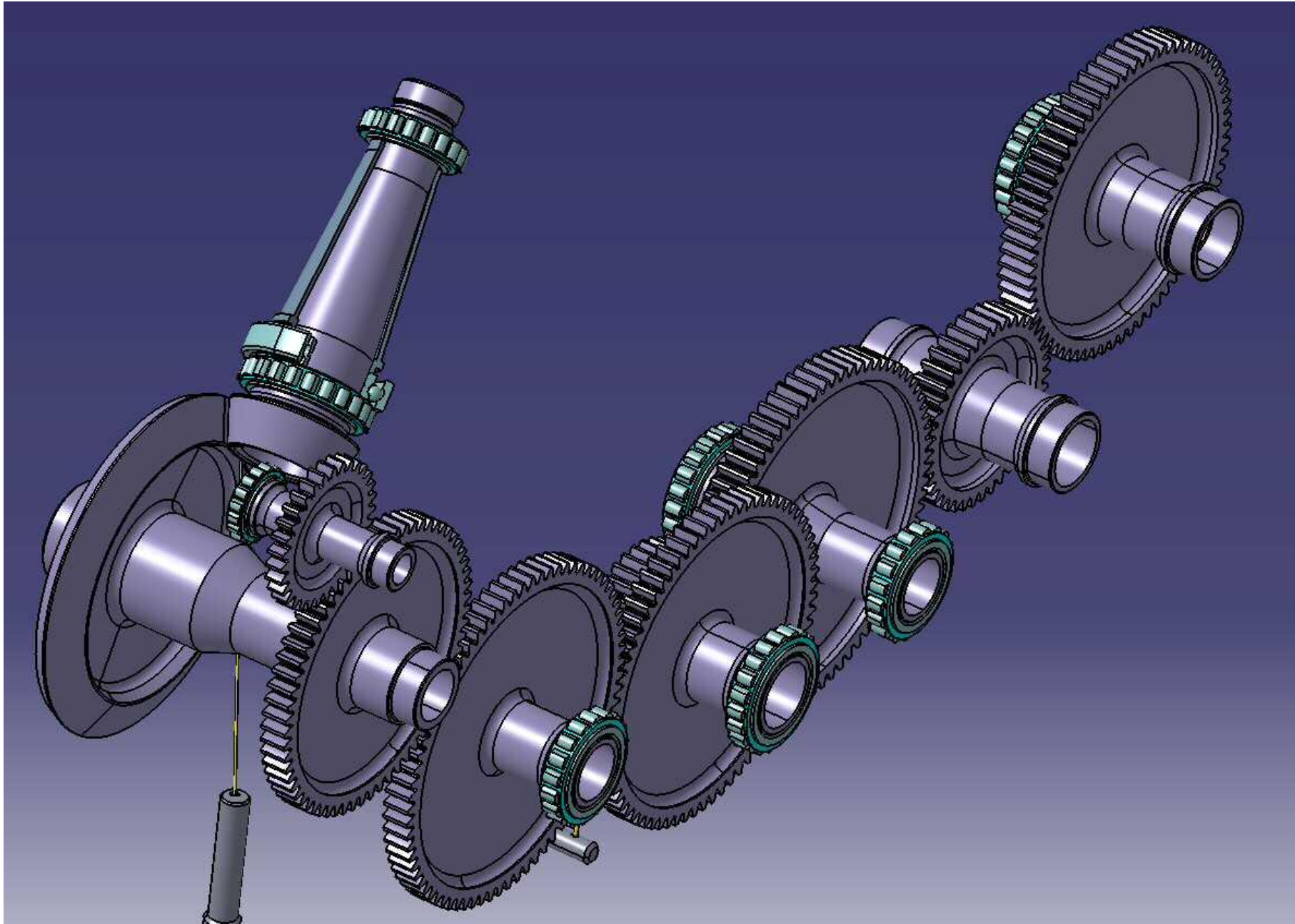


## VUE ECORCHEE DE LA BOITE D'ENGRENAGES.



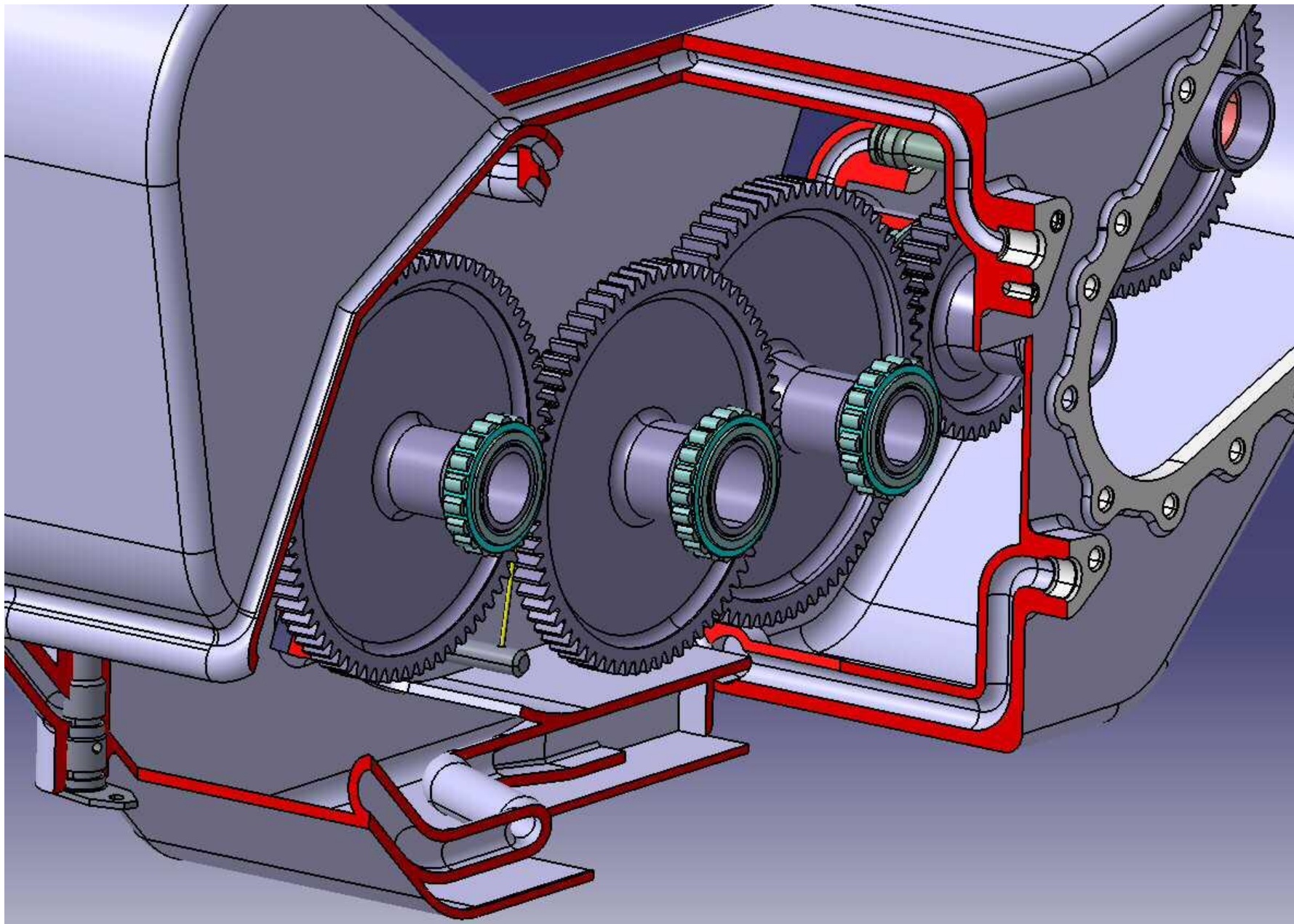


## VUE DE LA CHAÎNE CINÉMATIQUE.

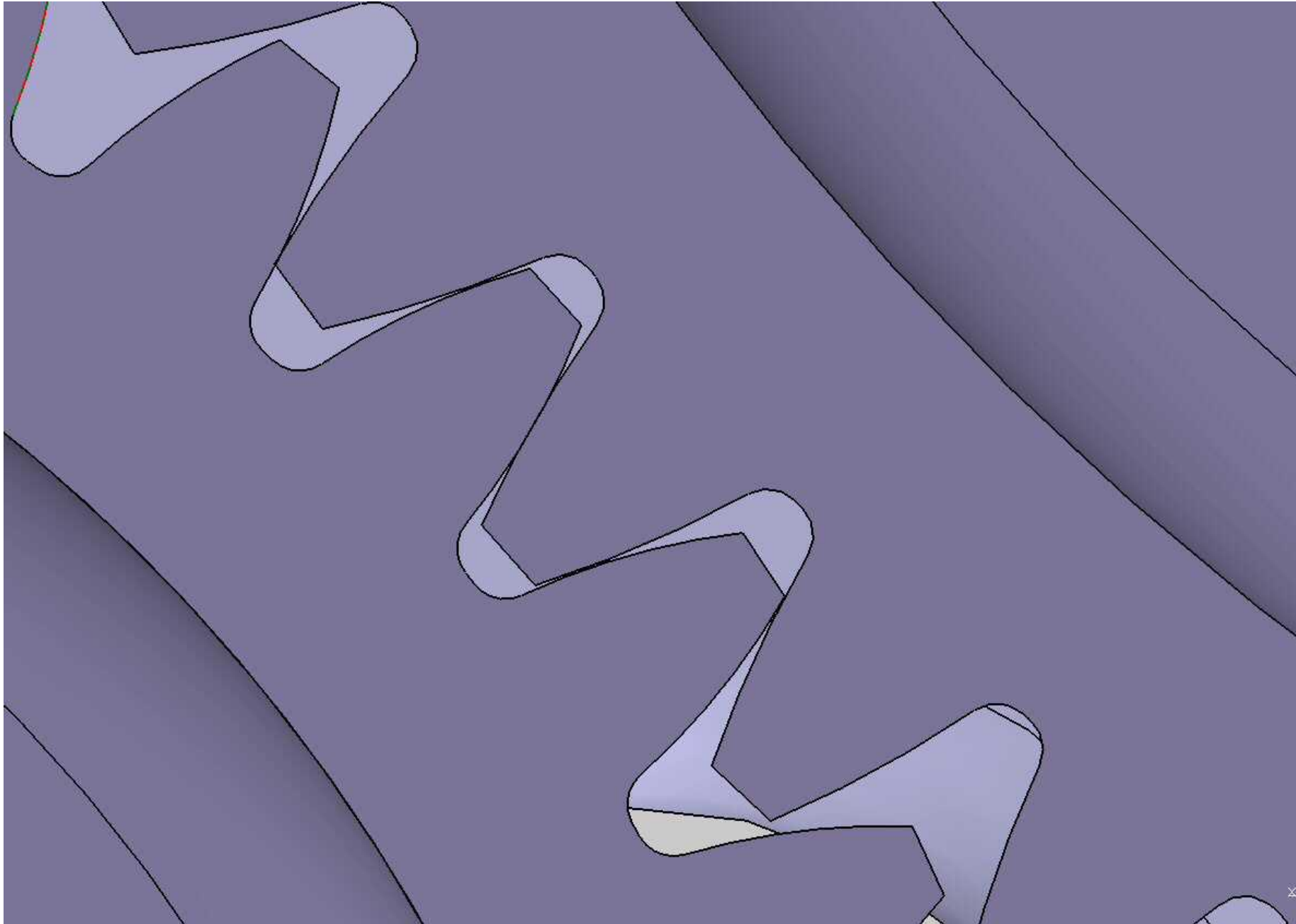


## VUE ECORCHEE DES TUYAUTERIES :

MODIFIABLES EN DIAMETRE ET EPAISSEUR (PAR CHANGEMENT DE DONNEES D'ENTREES.)

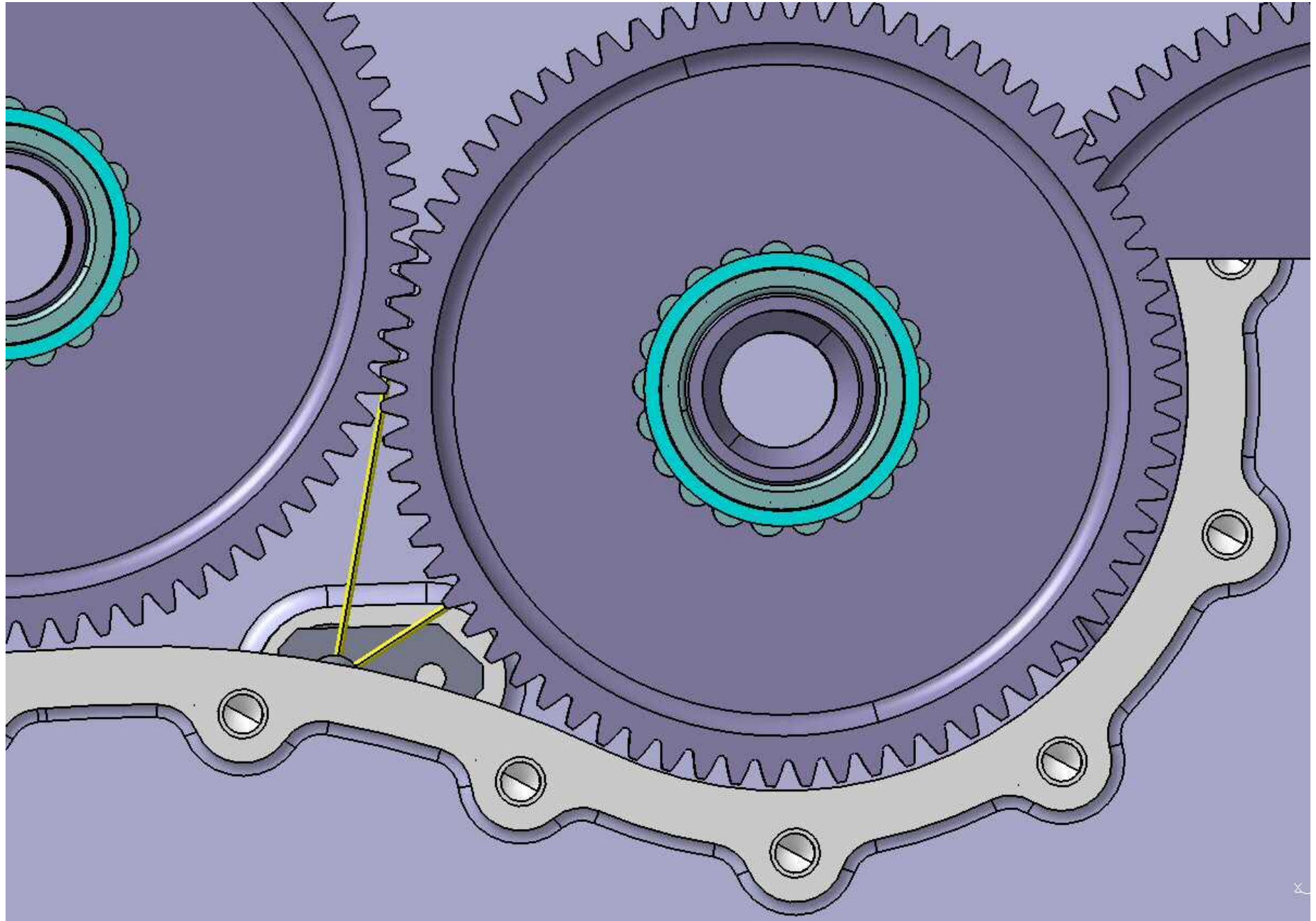


## VUE DE L'ENGRENNEMENT .



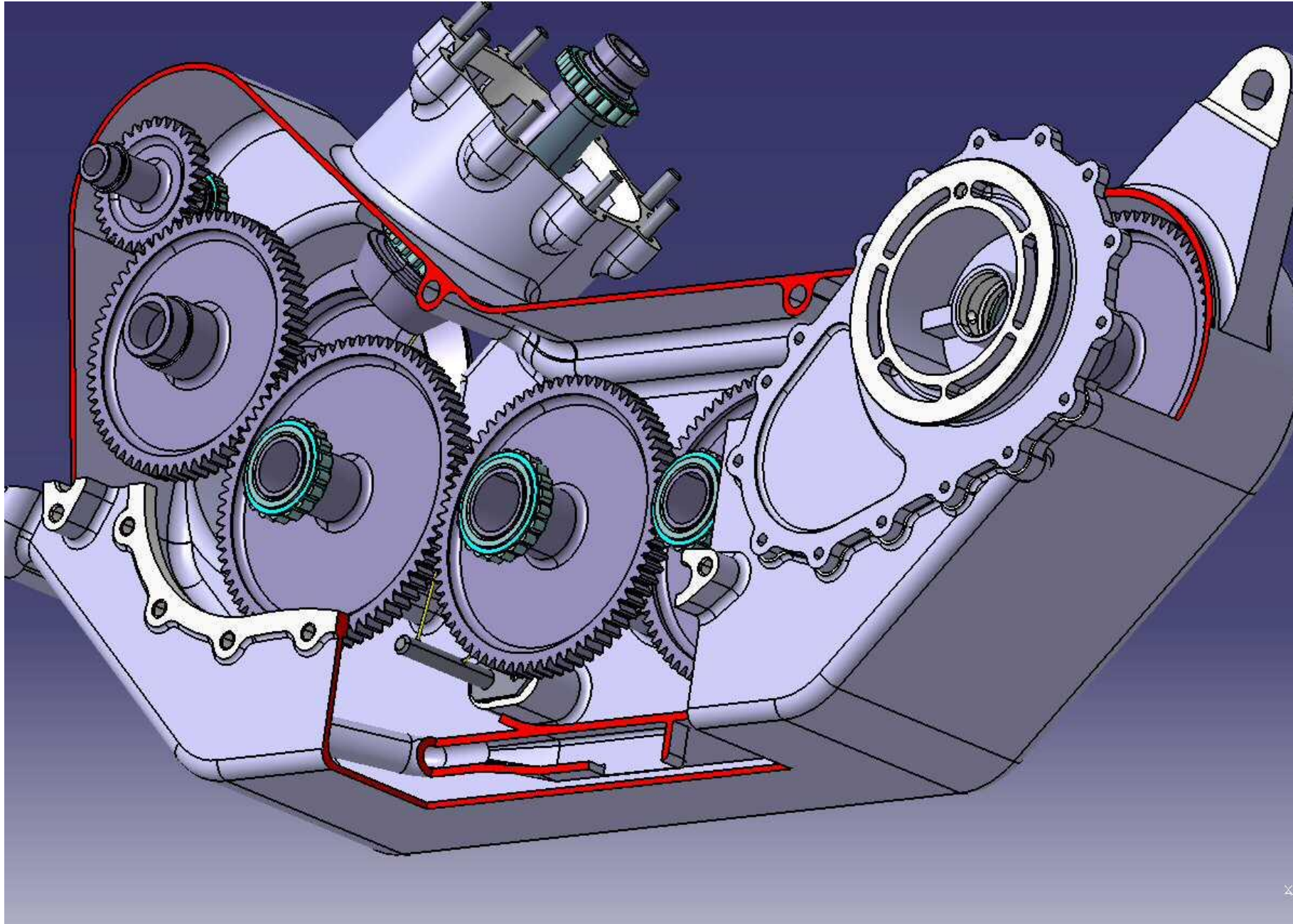


## GICLEURS D'HUILE.



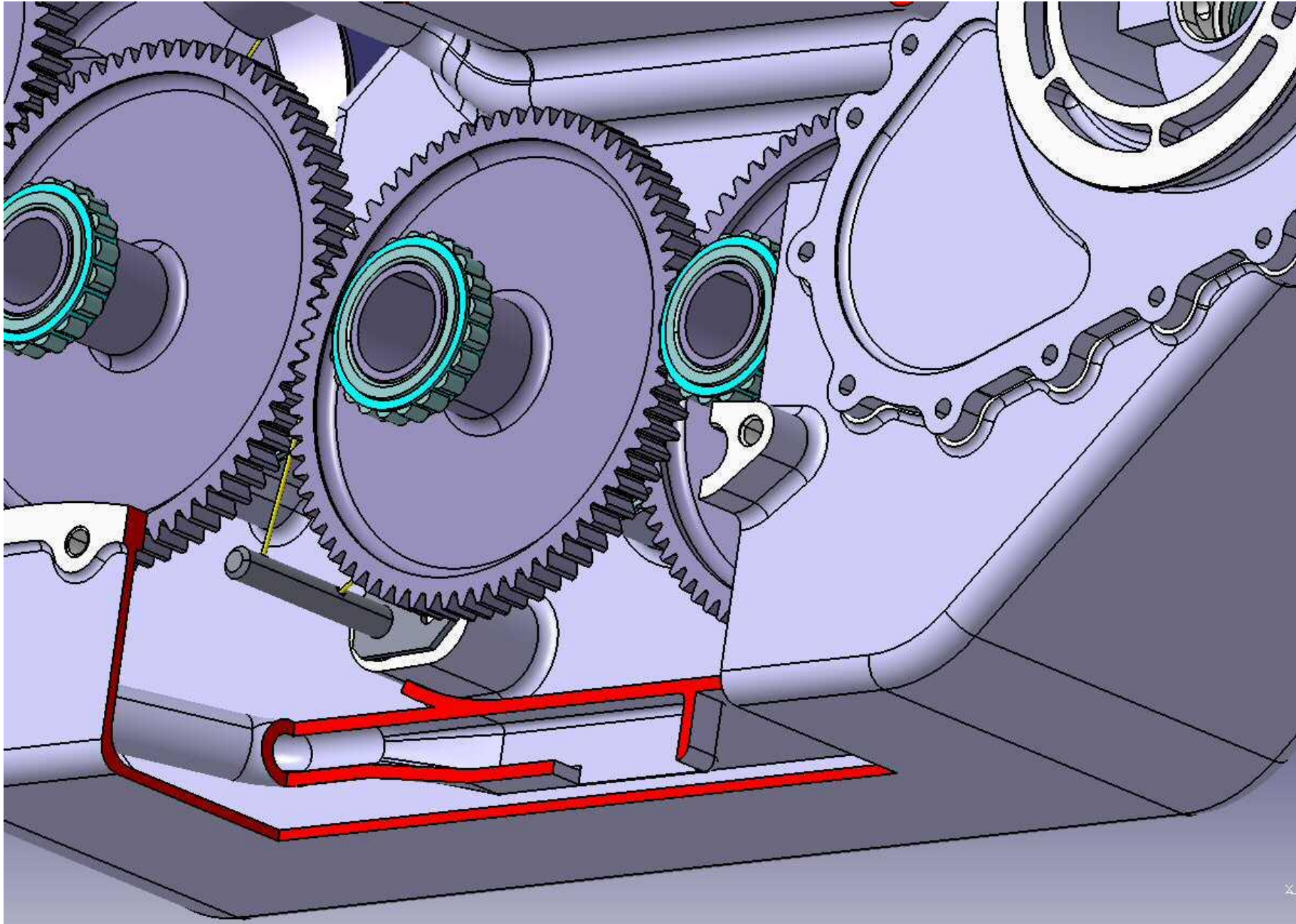


## VUE ECORCHEE DE LA BOITE.



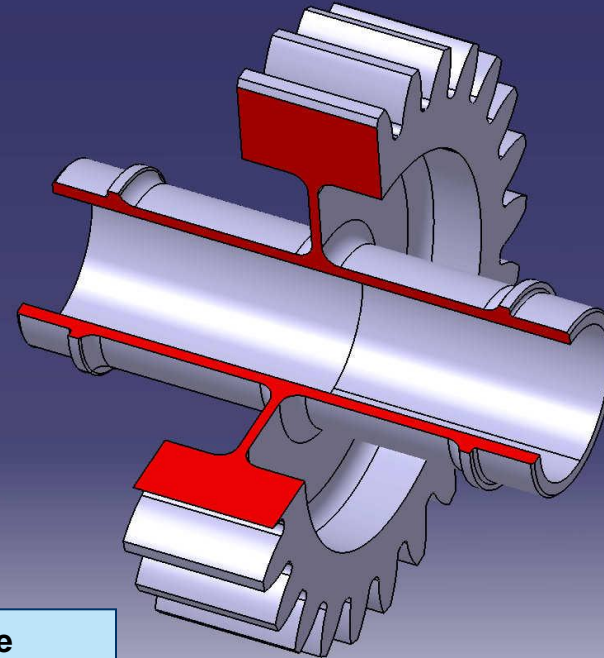
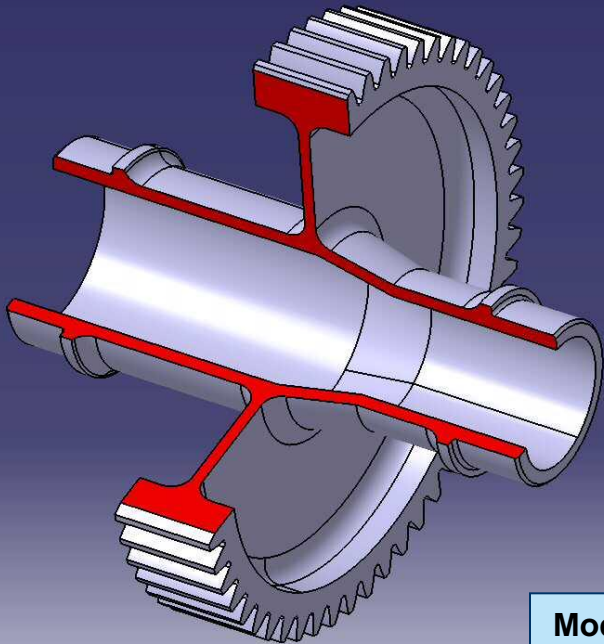


## VUE ECORCHEE DE LA BOITE.

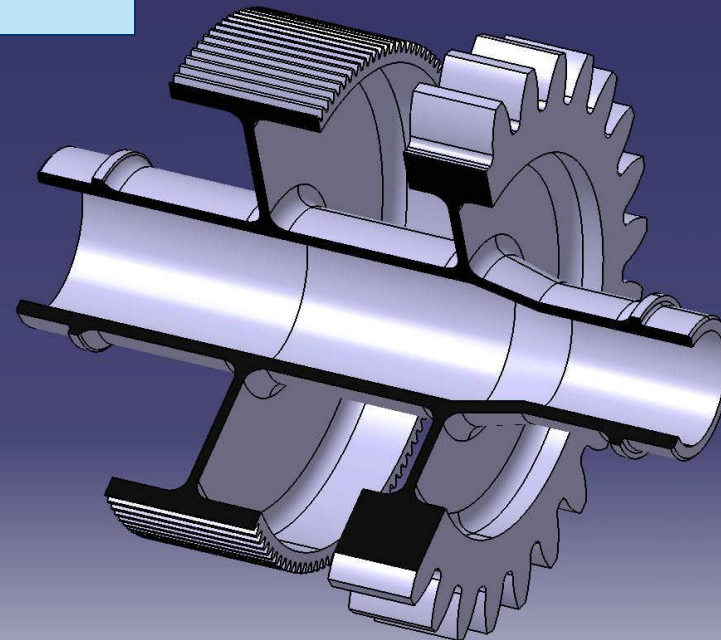
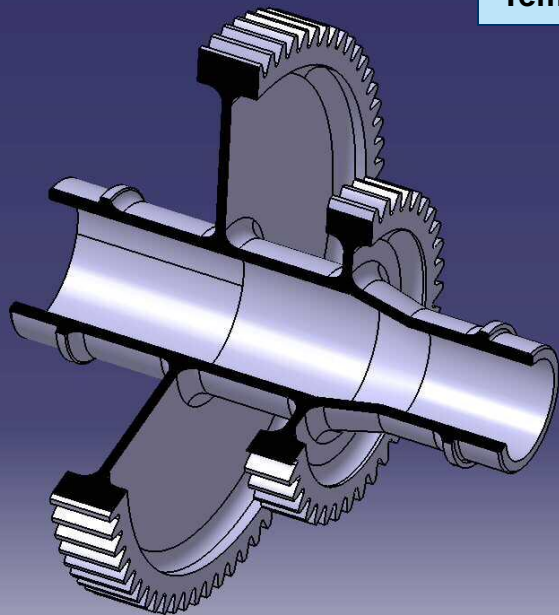




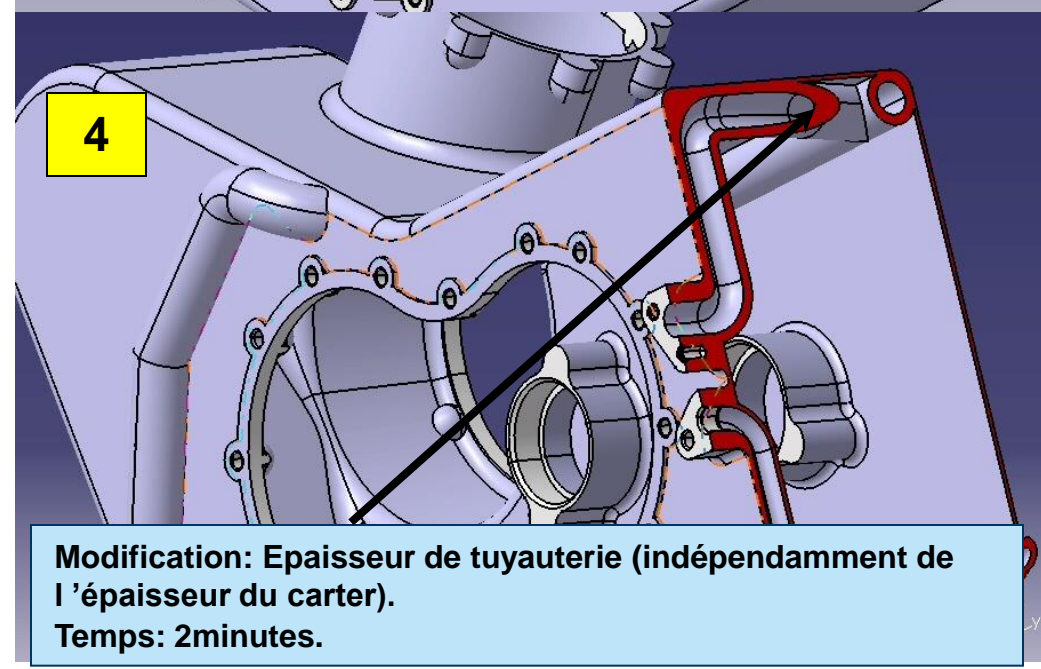
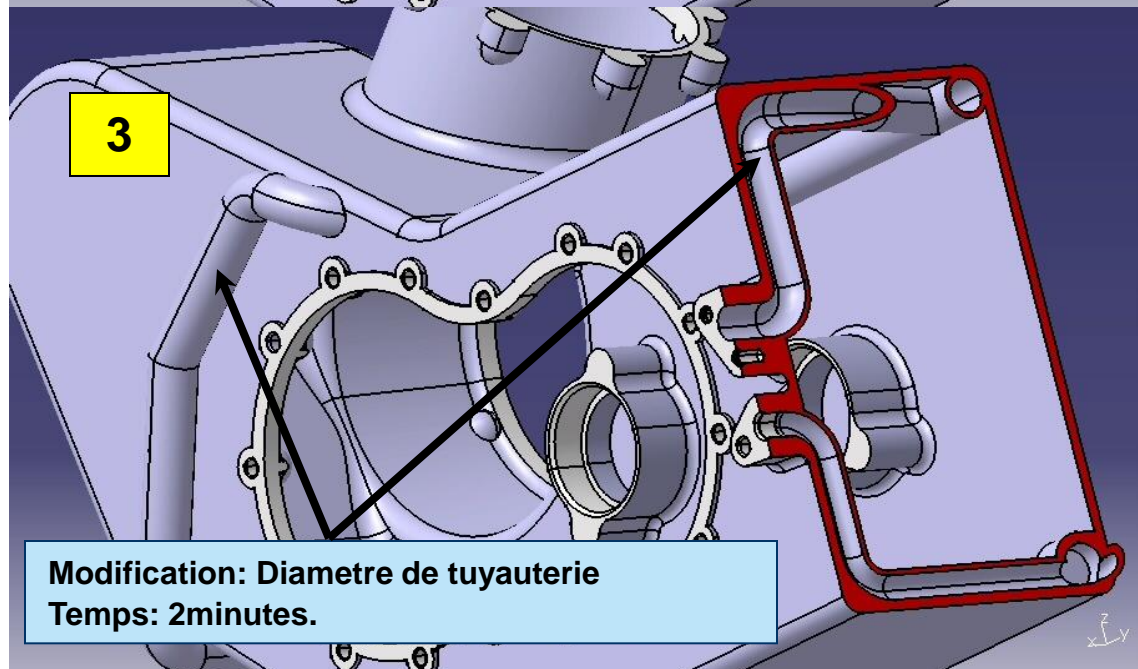
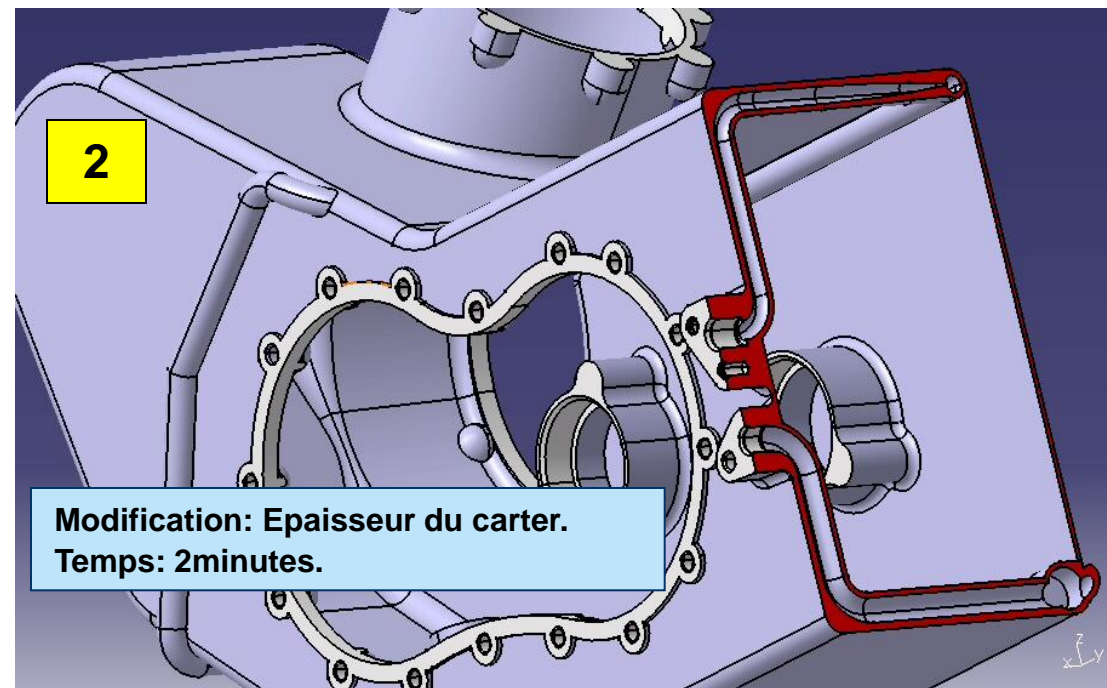
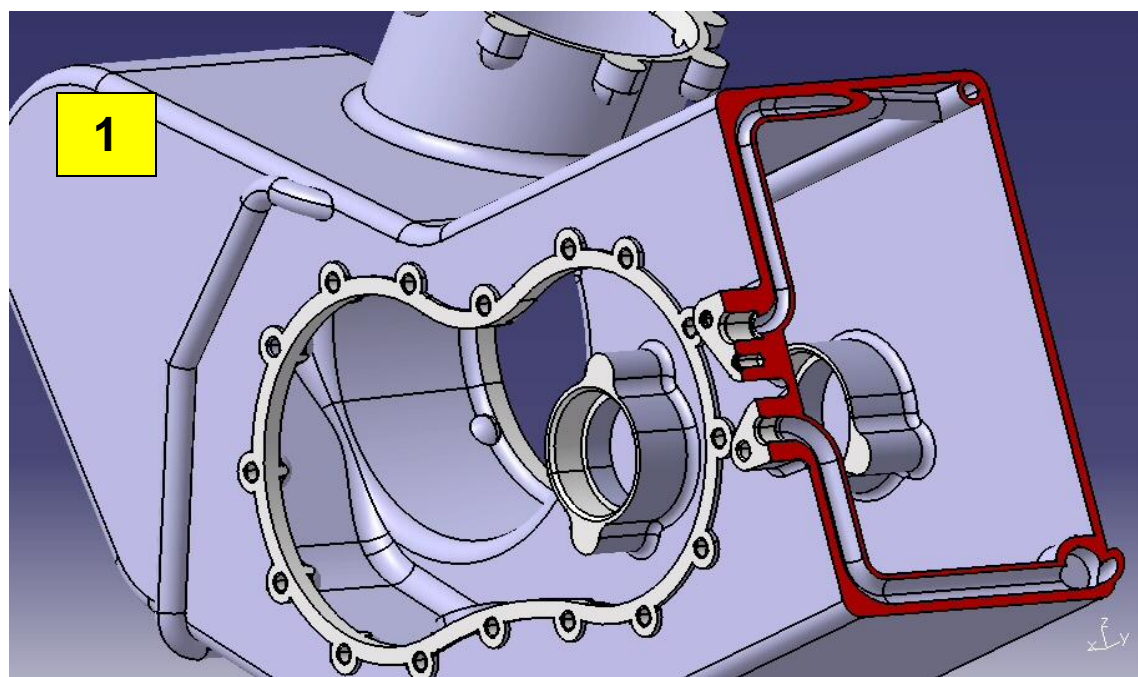
## MODIFICATION DES PIGNONS: PIGNONS COMPLETEMENT MODIFIABLES PAR CHANGEMENT DE DONNEES D'ENTREE.



Modifications: Diamètre de portée de roulements, module, nombre de dents.  
Temps: 30 secondes.



► **MODIFICATION DES CARTERS : PAR SIMPLE CHANGEMENT DE DONNEES D'ENTREE :  
EPAISSEUR DE CARTER, DIAMETRES DE TUYAUTERIES, EPAISSEUR DES TUYAUTERIES).**

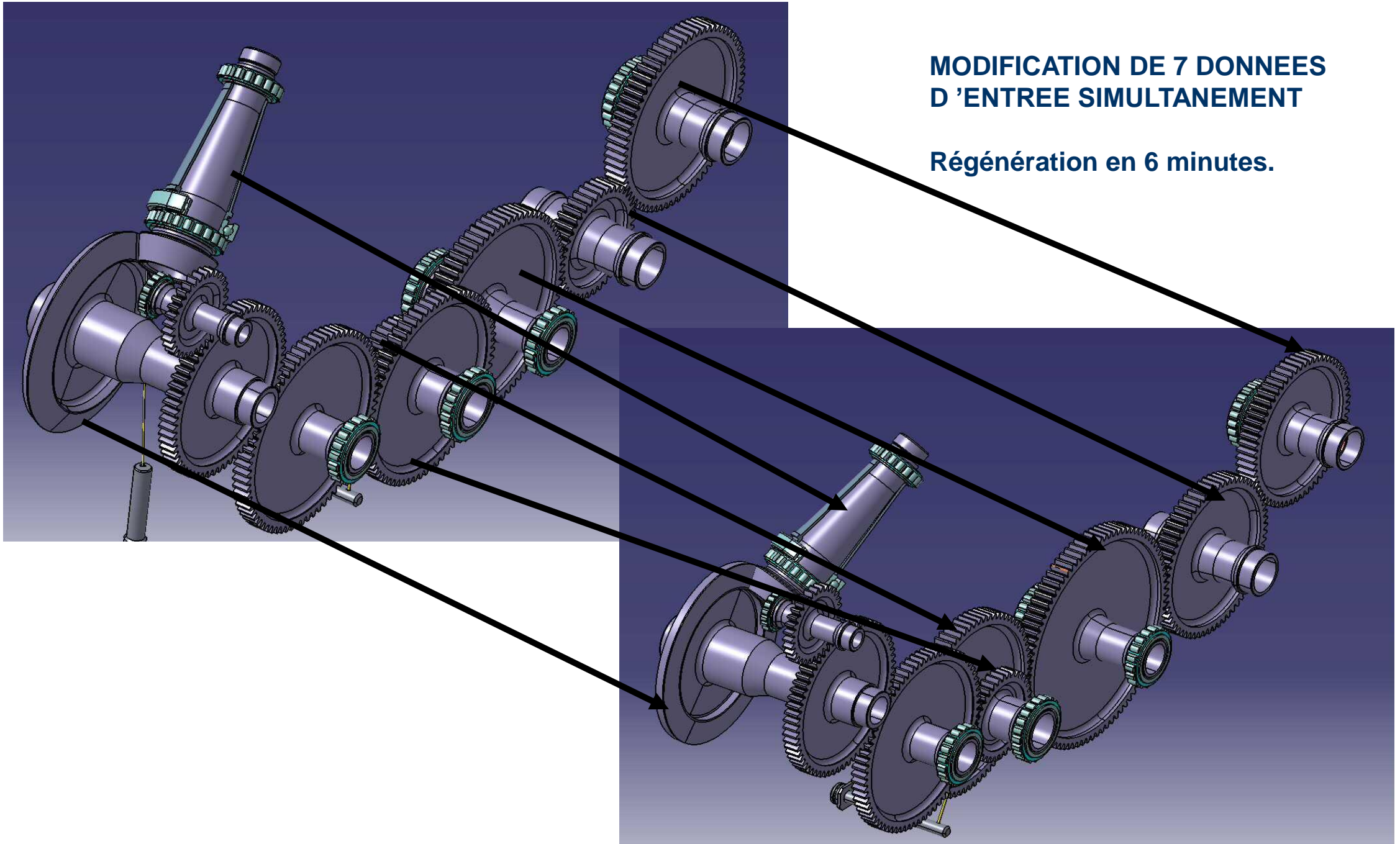




**MODIFICATION DES ASSEMBLAGES: PAR CHANGEMENT DE DONNEES D'ENTREES  
SIMULTANEMENT SUR DIFFERENTES PIECES.**

**MODIFICATION DE 7 DONNEES  
D'ENTREE SIMULTANEMENT**

**Régénération en 6 minutes.**



**MODIFICATION DES ASSEMBLAGES: PAR CHANGEMENT DE DONNEES D'ENTREES  
SIMULTANEMENT SUR DIFFERENTES PIECES.**

**AVANT**

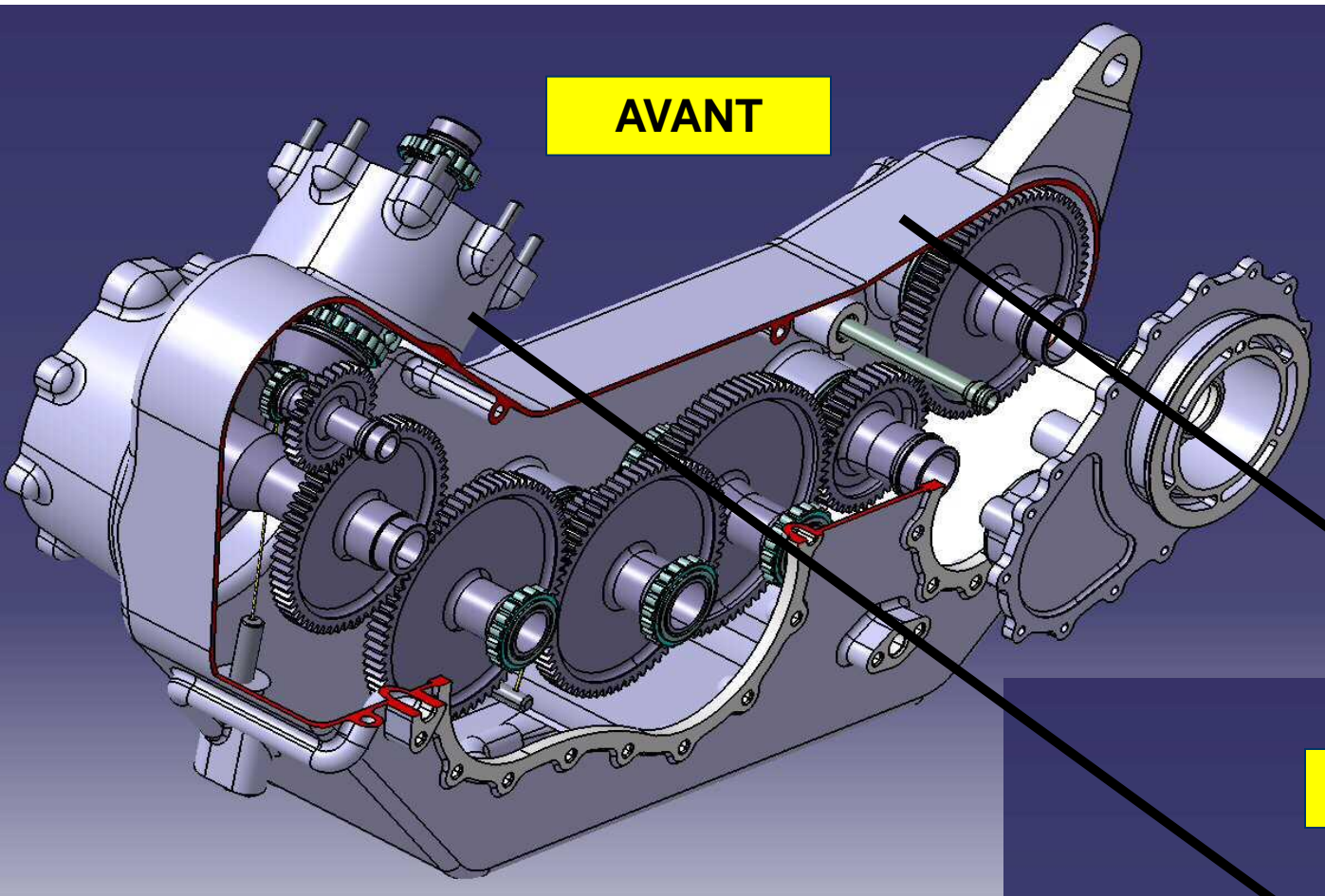
**MODIFICATION DE 7 DONNEES  
D'ENTREE SIMULTANEMENT**

**Régénération en 6 minutes.**

**APRES**



**AVANT**

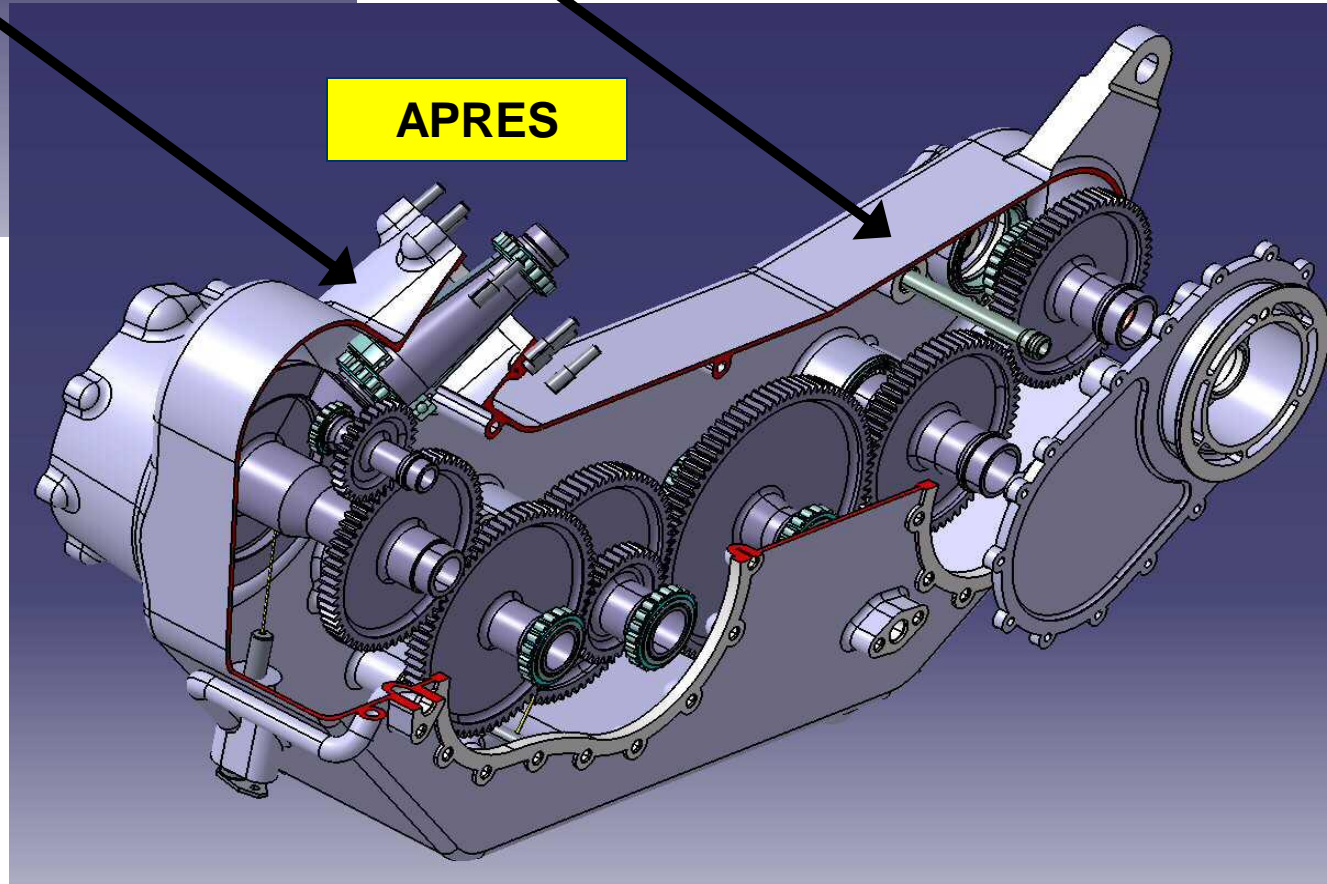


**MODIFICATION DE 7 DONNEES  
D'ENTREE.**

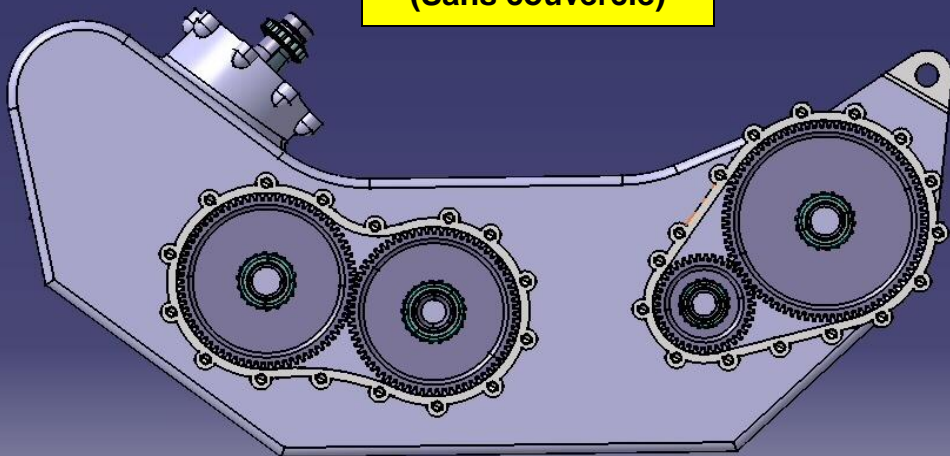
**Régénération en 6 minutes.**

**(Mise à jour simultanément des  
pignons, carter, couvercles,  
position des gicleurs, etc..)**

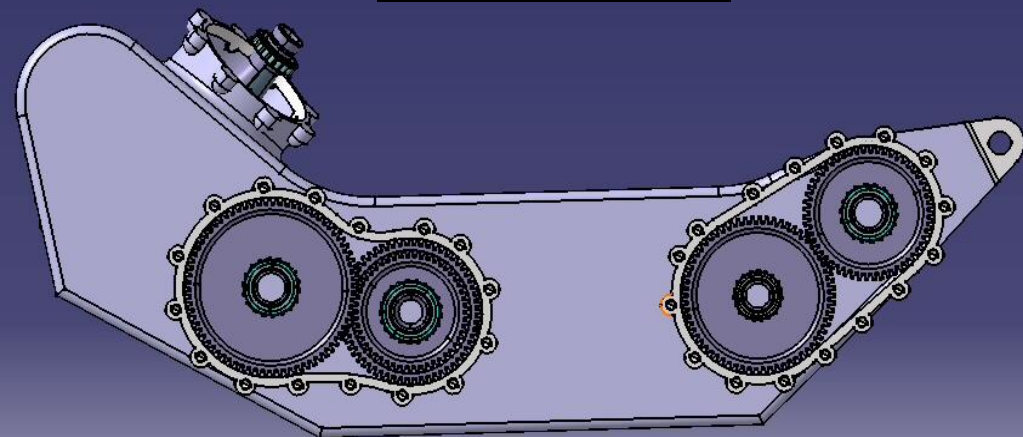
**APRES**



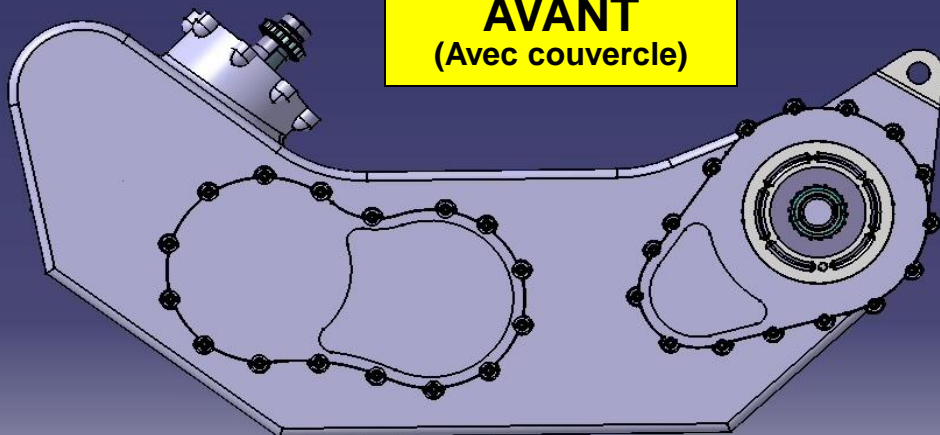
**AVANT**  
(Sans couvercle)



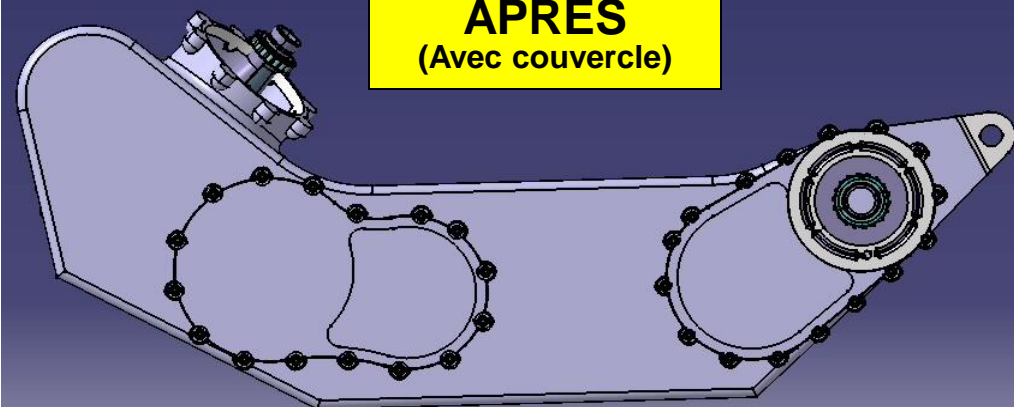
**APRES**  
(Sans couvercle)



**AVANT**  
(Avec couvercle)

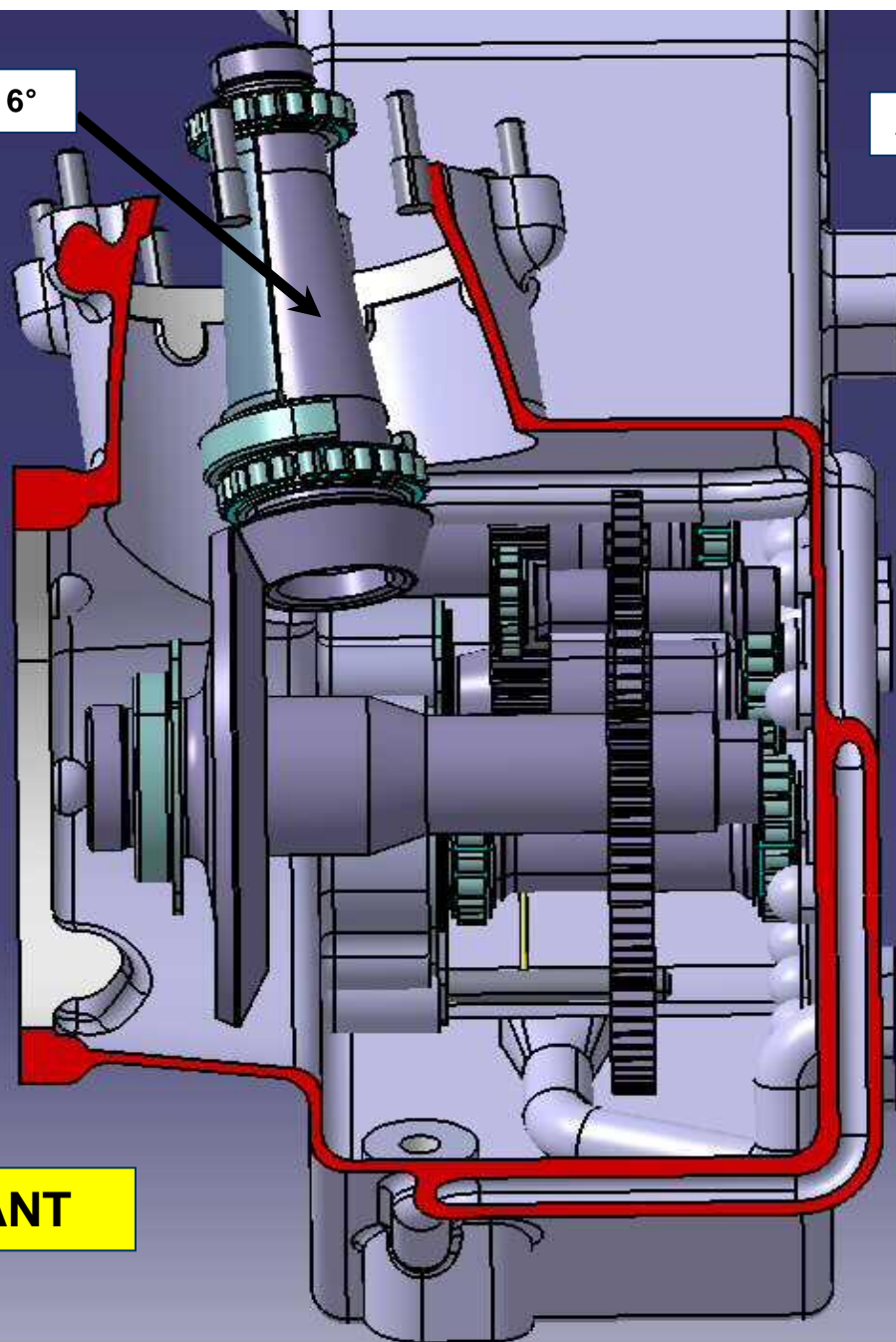


**APRES**  
(Avec couvercle)



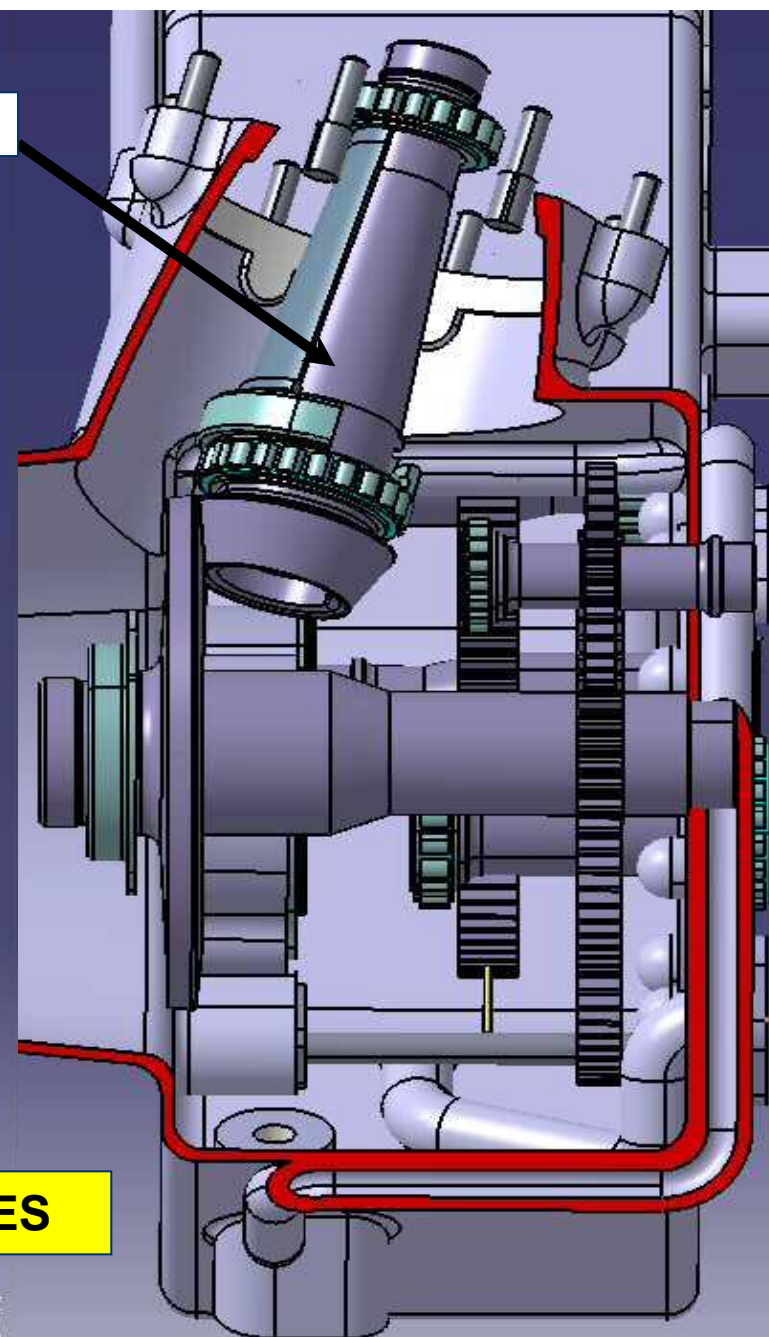


Angle :  $6^{\circ}$

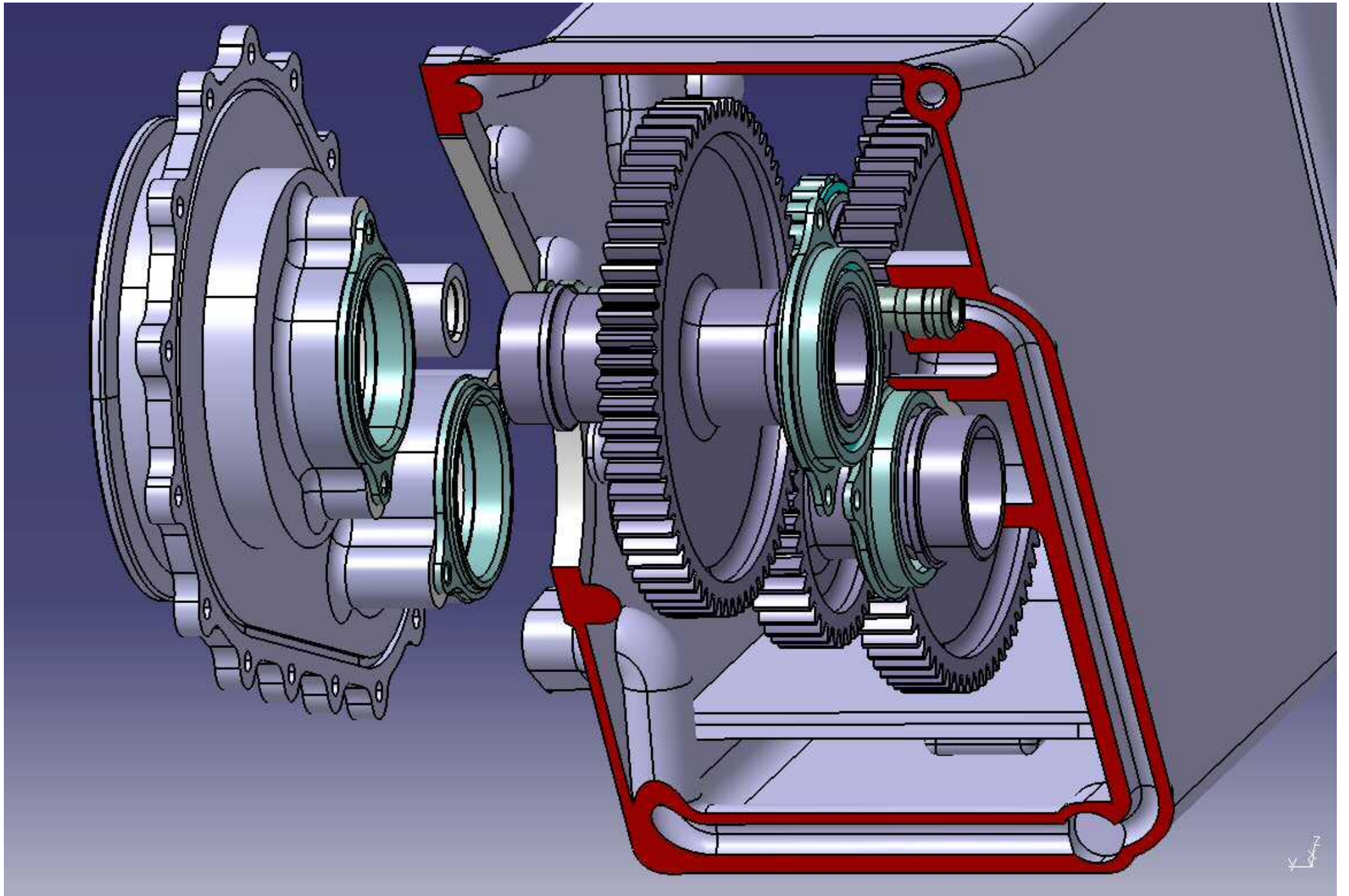


AVANT

Angle :  $-15^{\circ}$

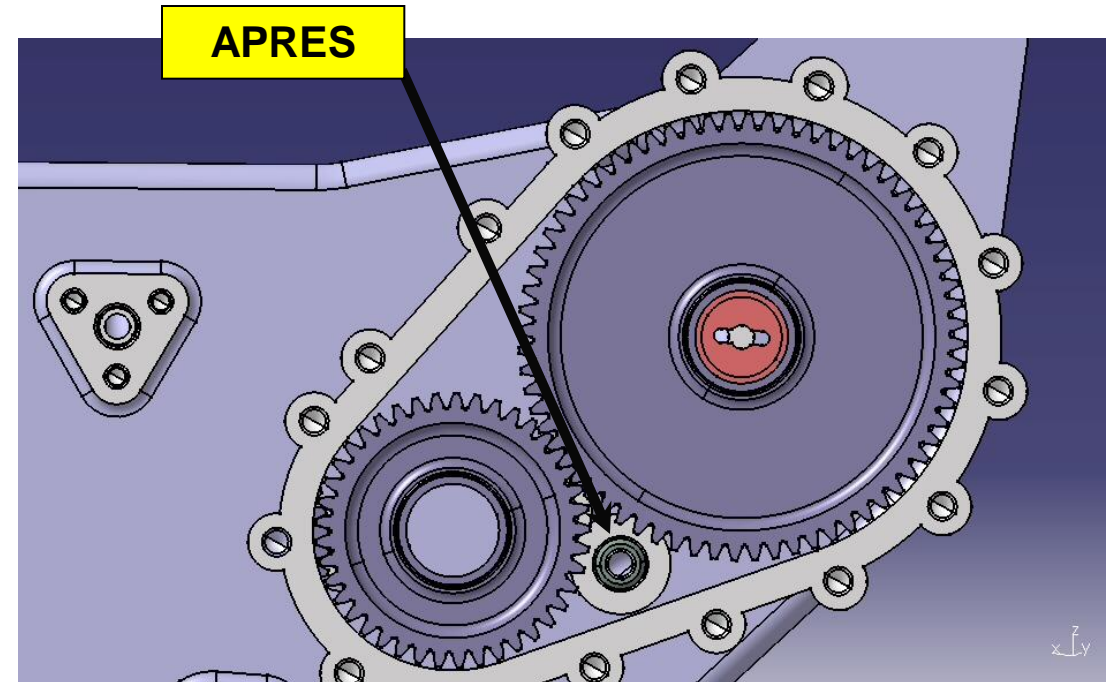
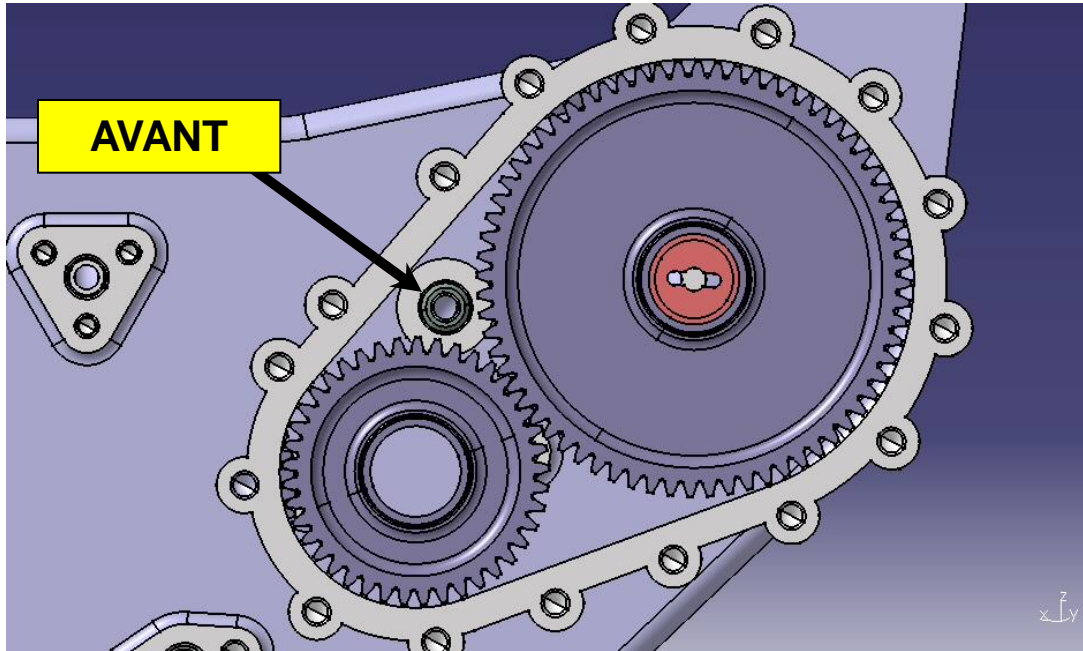


APRES





**EXEMPLE: MODIFICATION AVANT/APRES: 5 minutes.**



**MODIFICATION DES ASSEMBLAGES: PAR CHANGEMENT DE DONNEES D'ENTREES  
SIMULTANEMENT SUR DIFFERENTES PIECES.**

